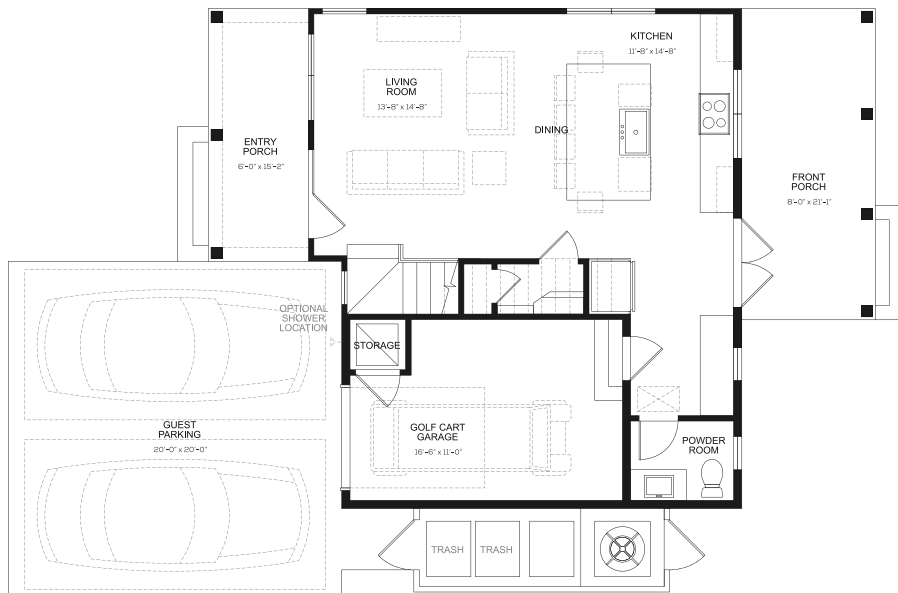


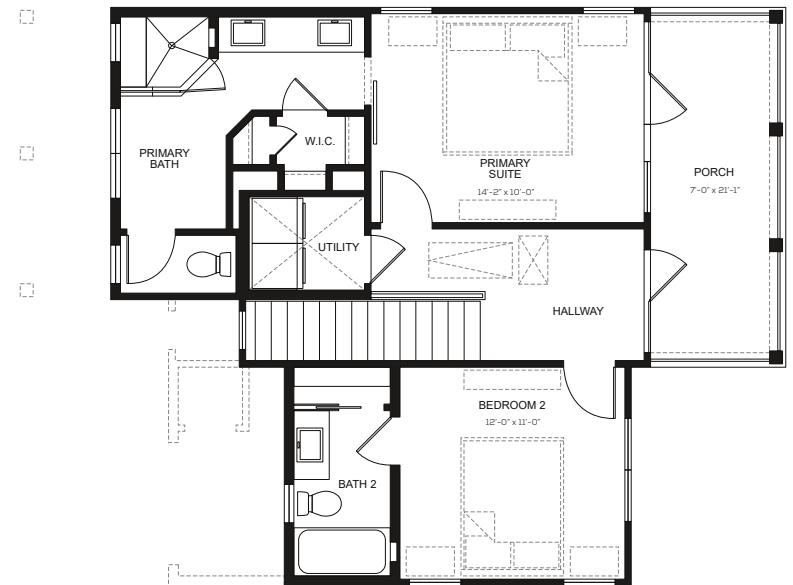
# The Coral Floorplan

CONDITIONED 1,219 SQ. FT.  
2 BED / 2.5 BATH

FIRST FLOOR



SECOND FLOOR



## The Havens Collection

Visit [PalmillaBeach.com](http://PalmillaBeach.com) or call **361.693.5729** for more information.

The floor plan drawings are conceptual only and subject to change without notice at the discretion of the developer. The developer reserves the right to make additions, deletions and modifications to the drawings; including but not limited to features, specifications, brand names, architectural design and details. Dimensions and square footages are approximate and may vary with actual construction. Brochure is for illustration purposes; it is not part of a legal contract. Release date: October 2022. 101422



**PALMILLA BEACH**  
RESORT & GOLF COMMUNITY